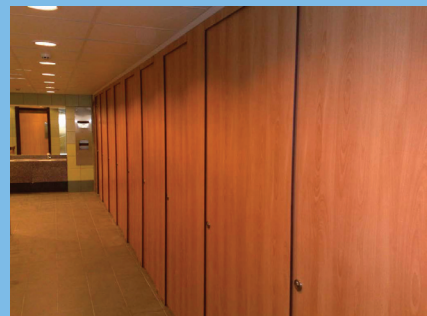


# Amwell

middle east w.l.l



aqua



washroom & changing room systems



# aqua

## washroom & changing room systems

The **aqua** range has been designed to provide a practical and stylish solution to your washroom and changing room requirements.

### C O N T E N T S

#### ■ cubicle systems

splash	page	2
door furniture and fittings	page	3
technical information	pages	4-5

#### ■ complementary products

aquasafe lockers	pages	6-7
aquabench seating	pages	8-9
integrated duct panelling	page	10

#### ■ colours

page	11
------	----

# splash



## overview

Splash cubicles combine 13mm solid grade laminate (SGL) panels with polished metal fittings for the ultimate in durability.

This robust specification makes Splash the ideal cubicle system for commercial buildings, schools, swimming pools and any other location subject to high traffic, high humidity and direct exposure to water.

## construction

Panels are manufactured from 13mm solid grade laminate (SGL). This material is extremely durable and water resistant enabling it to stand up to the rigours of everyday continual use.

Exposed panel edges are black and are machined to a smooth profiled finish, with radiused corner safety details to pilasters and doors.

## applications



Toilet cubicles are available with inward or outward opening doors as required.



Shower cubicles with doors, curtains or independent shower screens.



Changing cubicles are offered complete with integral bench seating.



Privacy screens can be supplied to match Splash cubicles.



Splash cubicles can be configured for disabled/ambulant disabled use. See pages 4-5 for details.



Splash cubicles are readily available in a choice of 6 standard colours, with additional colourways available subject to extended delivery and surcharge. See page 11 for details.

# door furniture and fittings

**splash** door furniture and fittings offer the benefit of 25 years industry experience.

Combining customer feedback with current regulations, this attractive collection of polished metal fittings are made to last.



## Indicator Bolt

With its unique and stylish appearance, the indicator bolt is designed for functionality. Featuring a high visibility red/white face plate with an ergonomic slide action for ease of use, especially for users with limited dexterity.

A captive door buffer is featured to prevent door/division clash and all fixings are concealed.



## Pedestal Leg

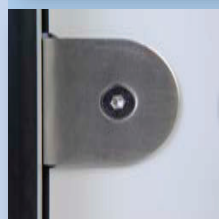
The pedestal leg supports the cubicle on both the pilasters and divisions for superb rigidity.

Front mounted for additional support, but with a minimal panel overlap to complement the modern feel of the cubicle.



## Hinges

Manufactured from stainless steel with nylon cams set to fall close, the hinges offer excellent strength whilst maintaining a safety clearance space between the door and pilaster to protect fingers from becoming trapped.



## Panel Fixings

Semi-circular channel brackets are used to connect the divisions/pilasters to the surrounding walls.

The discreet through fixings ensure a solid construction and complement the other polished fittings.



## Headrail

With slimline desing and radiused front profile, the headrail overlaps the pilasters on both the front and back for increased lateral support.



## Coat Hook

The short projection provides improved resistance to vandalism by reducing the possible leverage that can be applied.

# Technical information and access suggestions

## Door furniture



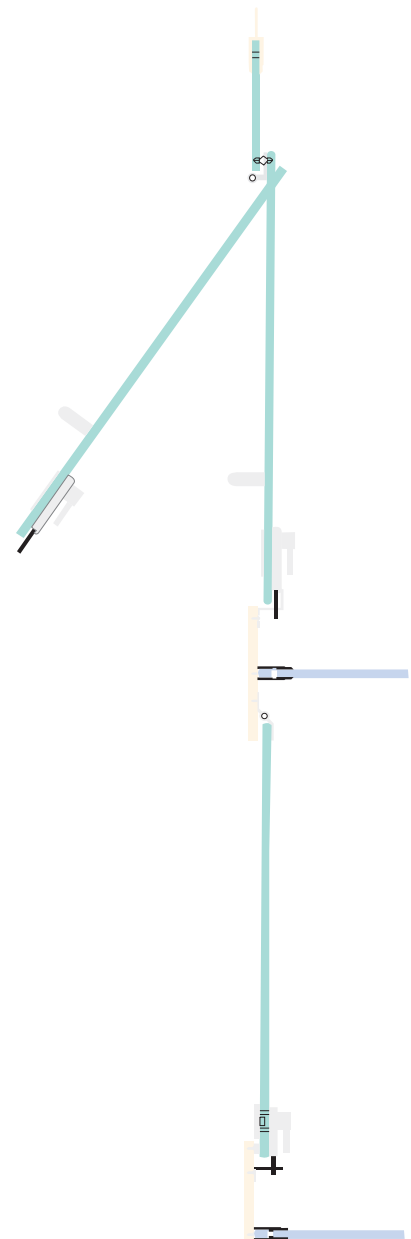
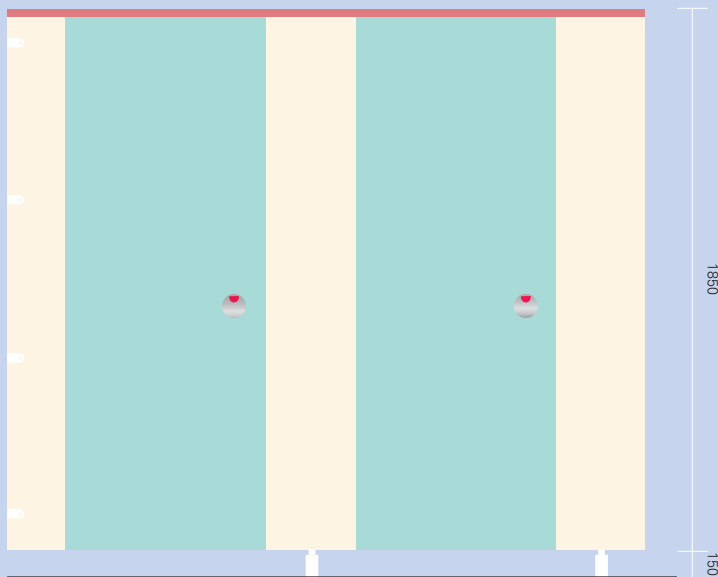
Indicator bolts operate with a simple slide action. The contact section of the bolt is large and ergonomic to enable ease of use by persons with limited dexterity.



To enable easier detection of occupancy status the indicator face plate denotes status showing red for engaged and white for vacant.



## Standard dimensions

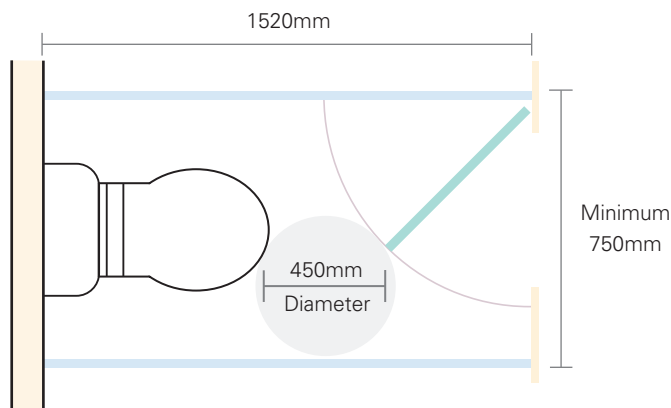
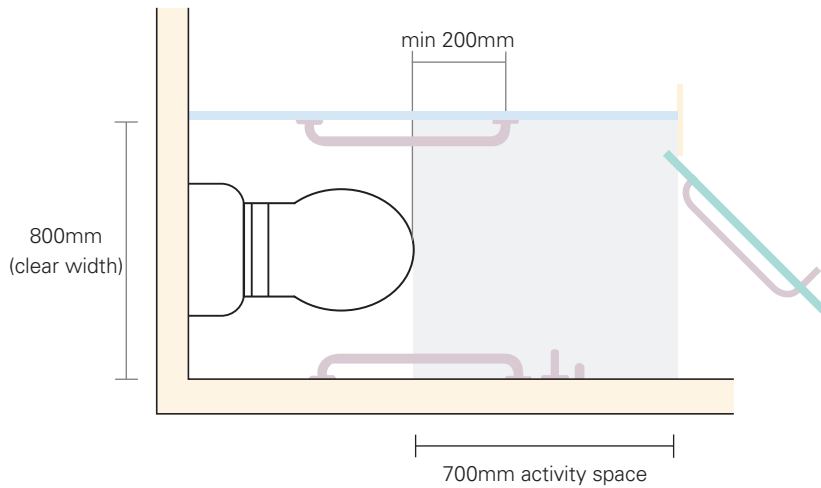


## Outward opening doors

Previous limitations in design positioned outward opening doors on the outside of the pilasters. This detracted from the appearance of the system and introduced a potential line of sight into the cubicle itself. Splash cubicles have been designed to address these issues;

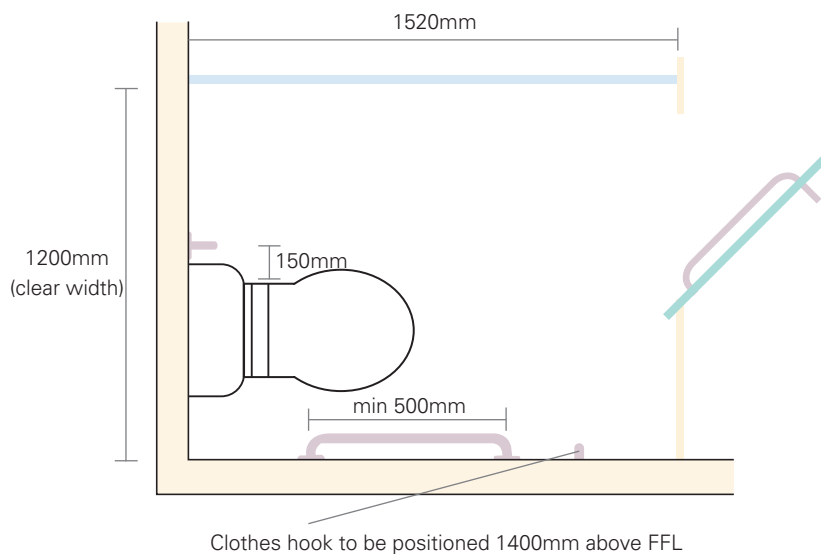
The introduction of a special hinge allows doors to be fitted to the inside of the pilasters maintaining consistency in appearance with adjacent standard cubicles. The addition of a full length closing extrusion maintains privacy by preventing a line of sight into the compartment.

Outward opening doors are supplied with an outside pull handle in polished aluminium to complement the other door furniture.



To achieve the minimum 450mm manoeuvring space an overall cubicle depth of 1520mm is recommended. In instances where room layout does not permit this and outward opening doors are not an option, pilaster and door sizes can usually be adjusted to maintain the required activity space.

In these instances setting out information can normally be provided on receipt of full WC pan information and room dimensions.



### Ambulant disabled

At least one cubicle per separate sex washroom area should be of 'Ambulant disabled' configuration. If there is only one cubicle, then this should be of ambulant type.

In addition to the standard cubicle/door furniture provided, horizontal grabrails and pull handles to the inside of the outward opening door should be incorporated within the cubicle.

### Access requirements

Normal toilet cubicles with inward opening doors should have adequate manoeuvring space.

Ideally this should be a space equivalent to a 450 diameter circle between the swing of the door, the WC pan and the cubicle division.

### Enlarged cubicles

If there are more than 3 cubicles in a washroom area, then in addition to an 'Ambulant cubicle', an enlarged cubicle could also be provided to assist persons carrying large bags or supervising children.

# aquasafe



attractive and durable  
lockers with flexible sizing

## overview

Aquasafe lockers are the ideal personal storage system for areas of high traffic, high humidity and direct contact with water. With 4 lock options including the new DIGI-lock, Aquasafe lockers can be made to measure to perfectly fit your changing room requirements.

## construction

Locker bodies comprise polyester powder coated aluminium uprights to each corner which connect the internal panels manufactured from 6/13mm white solid grade laminate (see Figure 1).

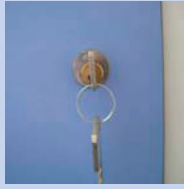
Unlike other systems that have a metal or moulded plastic body, the framework affords exceptional strength and permits total sizing flexibility.

Doors are manufactured from 13mm vandal resistant and waterproof solid grade laminate, with the core published to a smooth profile finish, and radius corner safety details. Recessed stainless steel door hinges provide a unique built in stop feature limiting the door opening to 105°. One hinge per door is sprung loaded.

## colours

Locker doors and decor end panels are available in a choice of 6 standard colours, with additional colourways available subject to extended delivery and surcharge. See page 11 for details. The framework is powder coated white.

# lock options



## Cam-lock

A standard Cam-lock is offered for use with personalized/allocated locker installations.



## Coin return

Well suited to public sports centres and swimming pools, the coin return lock will be provided ready to accept local currencies.



## DIGI-lock

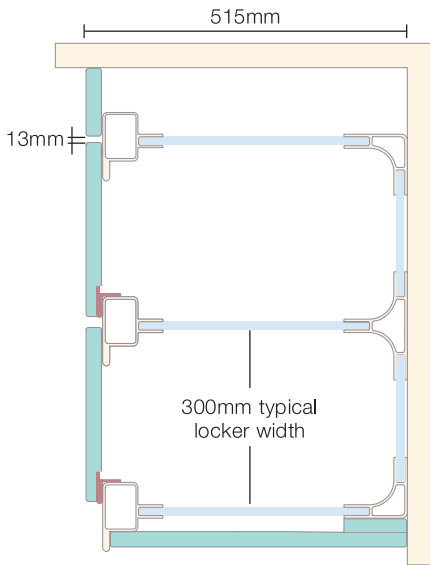
The DIGI-lock allows the user to input a personalised code for every use. This negates the use of keys, money and wrist bands. Each lock includes its own replacable battery supply.



## Locker hasp

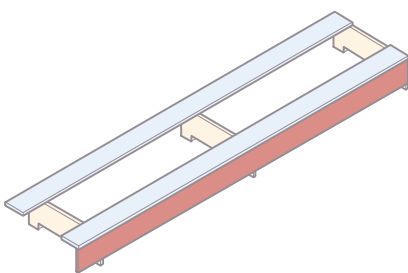
An attractive locker hasp can be provided to facilitate locker installations where the allocated owner provides their own padlock.

Figure 1



## Locker plinths

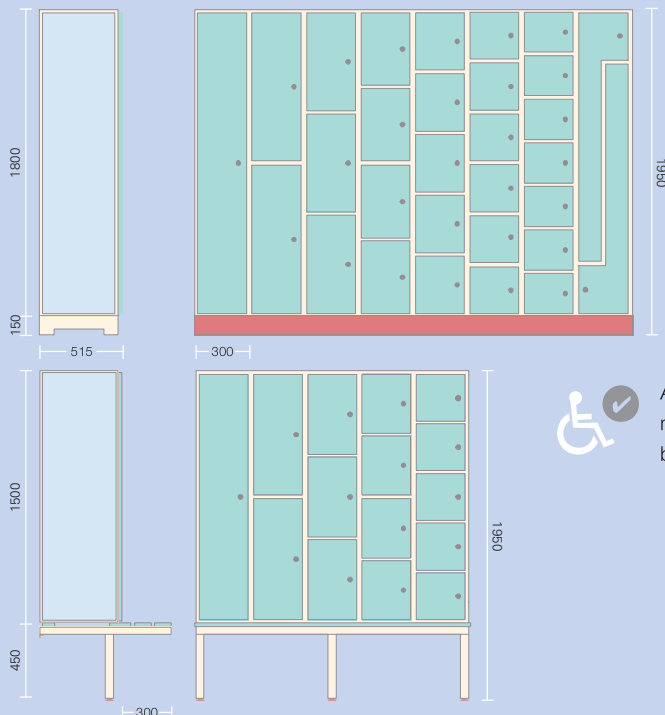
To ensure compatibility and avoid unnecessary wet trades, all full height Aquasafe lockers are supplied with 13mm solid grade laminate plinths as standard.



These allow for simple site levelling during installation and provide a firm base onto which a skirting/floor finish by others can be applied.

Alternatively the plinth fascia can be supplied to match the locker doors.

## Standard dimensions and configuration options



Aquasafe lockers can be manufactured to assist use by disabled persons.



# aquabench



robust made to measure seating and coat racking system

## overview

Aquabench is a durable seating solution designed to be as equally at home in the demanding environments of Sports and Leisure centres as it is in schools and offices.

Manufactured in single lengths of up to 3600mm to suit room layout, Aquabench remains the most flexible system available.

## construction

Comprising corrosion resistant aluminium frames and a choice of seating materials, Aquabench will stand the test of time in both wet and dry areas.

Each of the 9 styles available is supported on an aluminium framework/bracket system which is pre-treated and polyester powder coated after manufacture to ensure a durable finish.

## colours

Aquabench seats are available in a choice of 6 standard colours, with additional colourways available subject to extended delivery and surcharge. See page 11 for details. The framework is powder coated white.

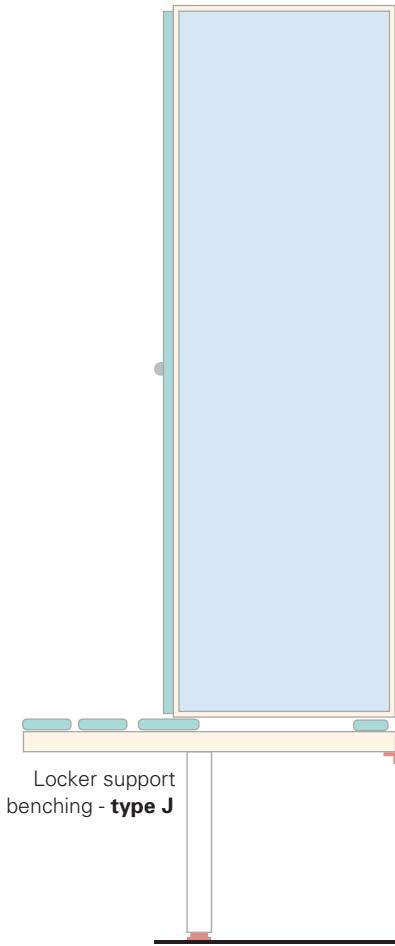
## seat options



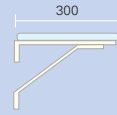
Three individual seating slats each 90mm wide x 13mm thick, manufactured from solid grade laminate with all exposed edges and corners radiused for safety.

# bench framework options

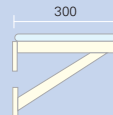
Fabricated entirely from aluminium, pre-treated and polyester powder coated, all framework options are of welded construction, with seats secured using stainless steel fixings.



## Cantilever/wall hung

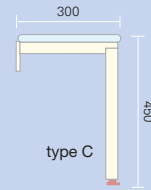


type A

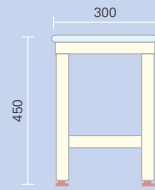


type B

## Wall/floor mounted



type C

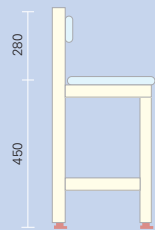


type D

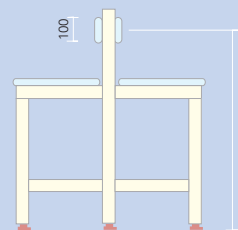


type E

## Self supporting



type F

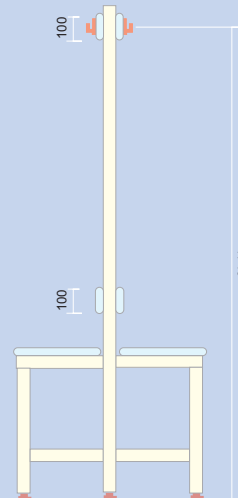


type G

## Self supporting inc integral back rest

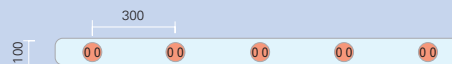


type H



type I

## Self supporting inc integral back rest and hat/coat rail



## Independent hat/coat rail



Aquabench can be manufactured to suit disabled persons by increasing the seat width/height as required.

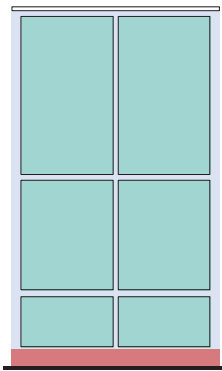
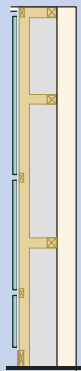
# duct panelling



## overview


Duct panelling systems conceal unsightly services, protecting them from vandalism, whilst maintaining an easy method of access should the need arise.

## full height

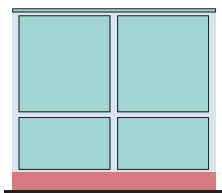
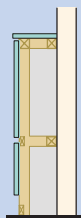


Suitable for WCs, urinals and wall hung wash hand basins, the amount and size of the panels in each set are manufactured to your requirements.

When choosing duct configuration, due consideration should be given to the size and weight of removable access panes for maintenance purposes.

 Shower panelling is also available manufactured with overlapping rebated horizontal edges to prevent direct ingress of water. This detail will require sealing on site by a specialist contractor.

## low level



Low level ducts are available with the option of a removable lid/dhelf panel.

## panel fixings

Concealed 'lift off' or 'push fit' brackets are used to mount the panels to the framework. Larger panels can be hinged to allow safer access for maintenance.

Budget cylinder locks can also be provided for added security.

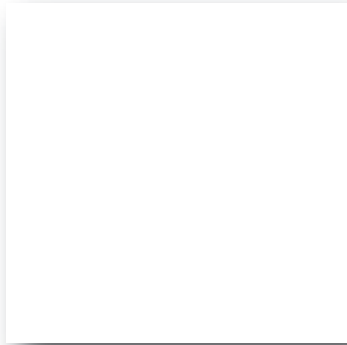


# standard colours

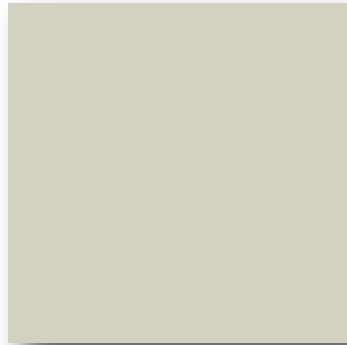
available ex-stock



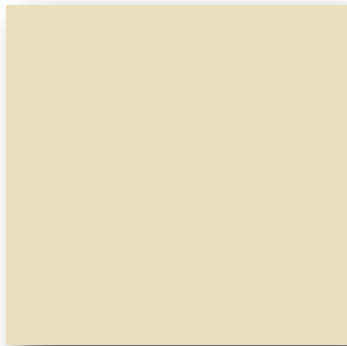
E - 01 White



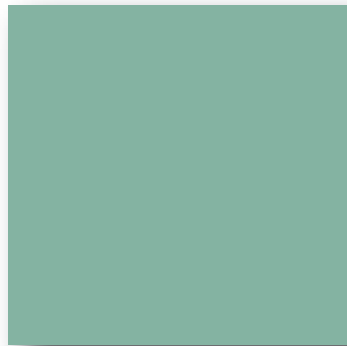
E - 04 Silver Gray



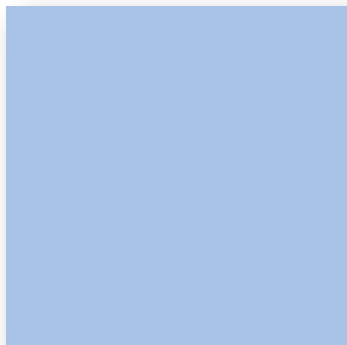
E - 02 Sand



E - 05 Aquamarine



E - 03 Heaven Blue



E -06 Speckled Grey





## Options

The following options are available at supplementary cost:

- Full height (Floor to ceiling) cubicles
- Variable overall height
- Outward opening doors with pull handles

The following options are available without supplementary cost:

- Variable ground clearance 50mm/100mm/150mm
- Nylon hardware in various colours

Notes:

.....

.....

.....

.....

.....

.....

.....

.....

.....

.....